

The Kisselgraph

June 2002

Official Publication of the Kissel Kar Klub

C/o Hartford Heritage, Inc.

147 N. Rural Street

Hartford, WI 53027

Telephone: (262) 673-7999

e-mail automu@netwurx.net

ANNUAL BANQUET MEETING:

The Annual Banquet Meeting has been set for August 10, 2002 that is a Saturday. We have always enjoyed reasonably good attendance at these events and the camaraderie has always been good, it's a big help to those people that are restoring cars, and of course, many Kissel family members are on hand.

One of the reasons for having the event that day, is that the Chamber of Commerce is promoting a "Family Day." The Family Day has many activities going on all over town and sponsored by them. Many of you who come for the Annual Banquet Meeting, may want to participate in them. Number one is a very good judged arts and craft show held right in front of what use to be the Kissel Factory. It is in Willowbrook park, very nice setting! There will also be activities sponsored by the Chamber at the Airport, including plane rides, plane display and hot air balloons. It would be pretty easy to make a complete weekend out of your visit to Hartford.

Please let us know two weeks prior to August 10th, if you plan on coming. Any of you who wish to bring your car do so. We're hoping that next year, we'll be able to include a regular car show. In the next article we will explain the difficulties of having a car show here this year.

We would recommend the following motel for lodging during your stay in Hartford. Americinn Motel of Hartford, 1525 E. Sumner Street, Hartford, WI Phone # 262 673-2200, as a good place to stay.

Next door is a Super 8, 1539 E. Sumner Street, Hartford, WI, Phone # 262 673-7431.

CONSTRUCTION AGAIN:

As most of you are aware we have been under construction for the Schauer Performing Arts Center, the parking lot, demolition for the Recreation Department building that was put up, 2 years ago. It seems every year for the last five years, some sort of construction has been going on, which has not of

course done us a lot of good., from the stand point of business. Over all, the end result will certainly will be of benefit to us, there is no question about that. There will be some detours on the road right next to the museum. The city is going to be totally dismantling the road, replacing storm sewer lines, water lines, pavement, gutters, everything is going to be replaced, including the bridge at the south end of the parking lot. This will be going on for most of the summer. There will always be a way to get to the museum, but it will not be finished as smooth road. They tell us that it will be finished by October, but of course they also said it would have been be started by April. Neither April or May has seem any construction starting, so your guess is as good as our, as to when it will actually be done.

MUSEUM PICTURES:

So many of you have not been here and perhaps have even had questions about the museum itself, size and what's contained herein. We have taken some photographs of the interior of the building, which are included with this newsletter. You can see from the pictures that our collection is quite substantial and as of last year we are on two floors. Drop in sometime.

GRANT MONEY NOT YET FLOWING:

The Grant that we had applied for is still moving slowing. It's amazing how fast the Department of Transportation cannot move! It's ironic also, that someone who is interested in moving products and goods can be so slow at some other phases of their operation! In any event we have now been told that some of the work to be done on the museum will be starting this year, probably not until after July. Hopefully, at least we will get a new roof on the building before winter. We are still looking for donations from the club to

help us with the match, it is a matching grant that we received. The Grant was \$426,000 and we have to come up with 20%. We would really like to thank those of you that have already donated \$500 to \$25,000 it's genuinely appreciated. Hopefully Those who have never seen the museum, the enclosed pictures will help you ascertain our viability.

THINGS A BIT SLOW:

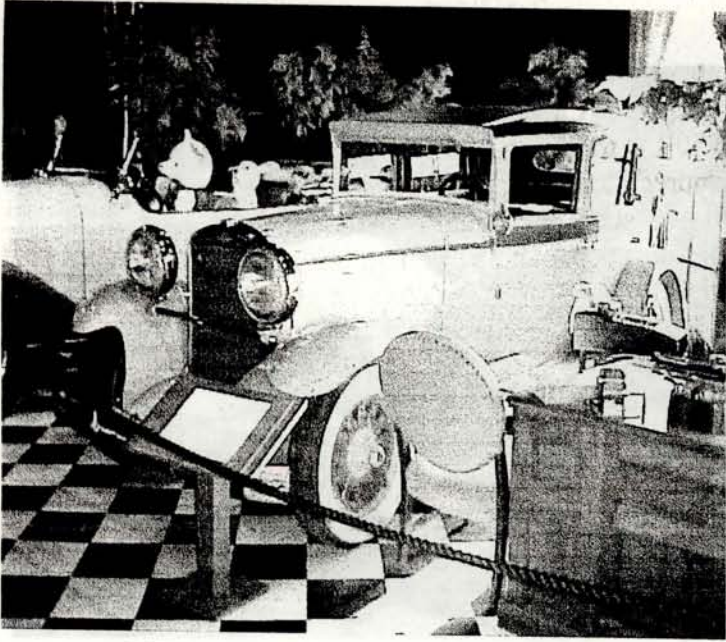
There has not been a lot of activity as far as buying and selling of Kissels this year. In fact it has been a very quiet year when it comes to Kissels. Of course, a lot of other things has been quite quiet since last September. We had conversations with Hilbert Nippert in New York that's working on he car, also Mike Barry came to see us to get ideas on his Kissel project. Joe Leaf and his wife from Washington State spent a couple of days here. He has decided that he is going to get at his Kissel Speedster. He was here to take pictures and gather information and take a lot of measurements, we wish Joe a lot of luck, and very nice to meet him and his wife for the first time.

FIND US ON THE INTERNET:

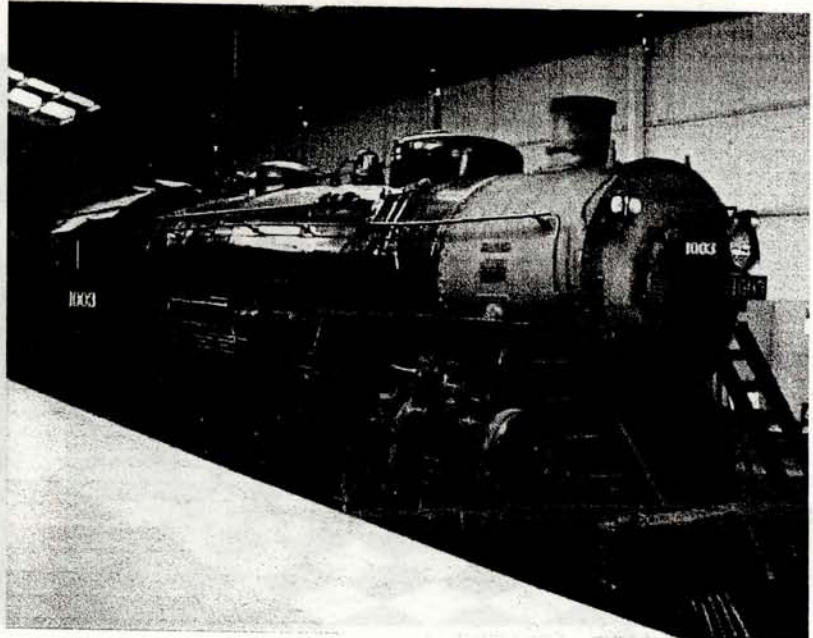
The easiest way to see our page on the internet is to plug in the following:
wwwexplorerwisconsin.com/wisconsinautomotivemuseum

The particular page is the most up to date page. We are linked to several different internet pages, but many of are no longer valid.





Main Floor 1930 Kissel



250 TONS OF POWER



OUR JEEPSTER A REAL DRIVER



THE NEW UPSTAIRS



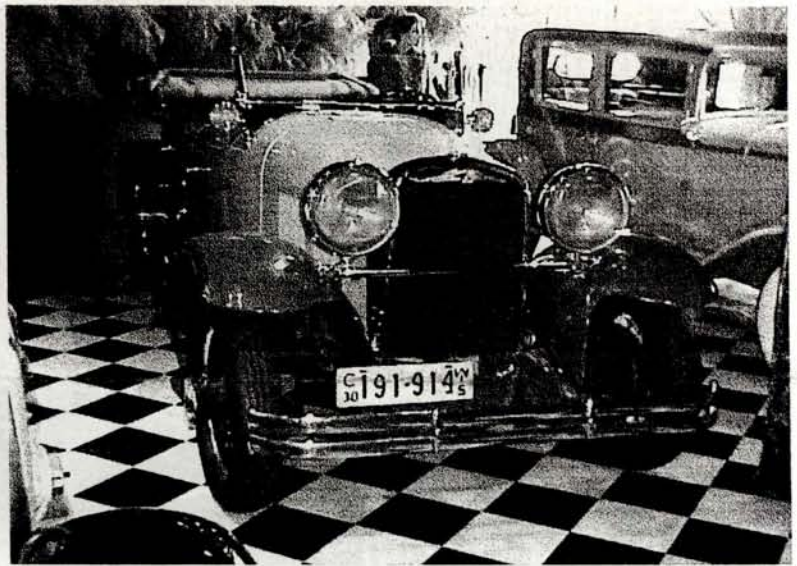
MAIN FLOOR 1923-1930 KISSELS



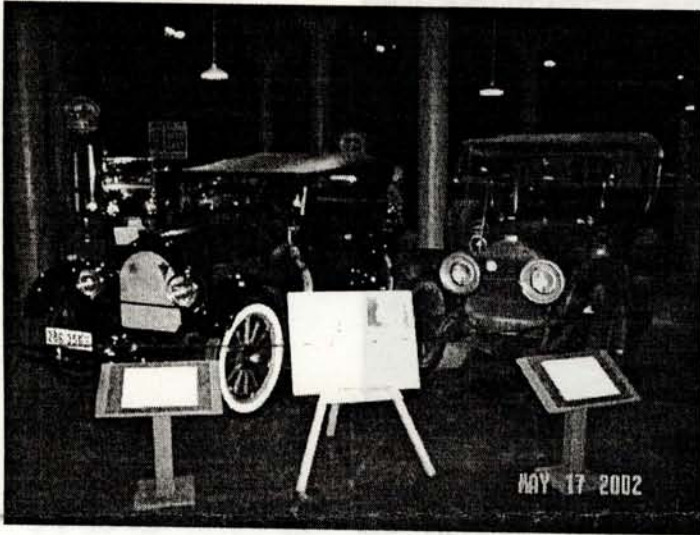
1928 & 1920 KISSELS



THE NEW UPSTAIRS



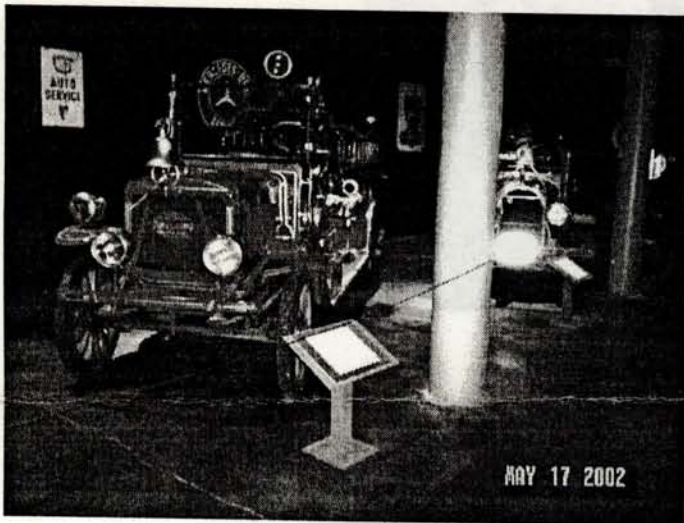
1930 KISSEL



1923 KISSEL 1912



1923 KISSEL TRUCKS 1918



1923 KISSEL FIRE ENGINE 1926



1929 KISSEL 1925



1925 KISSEL 1923



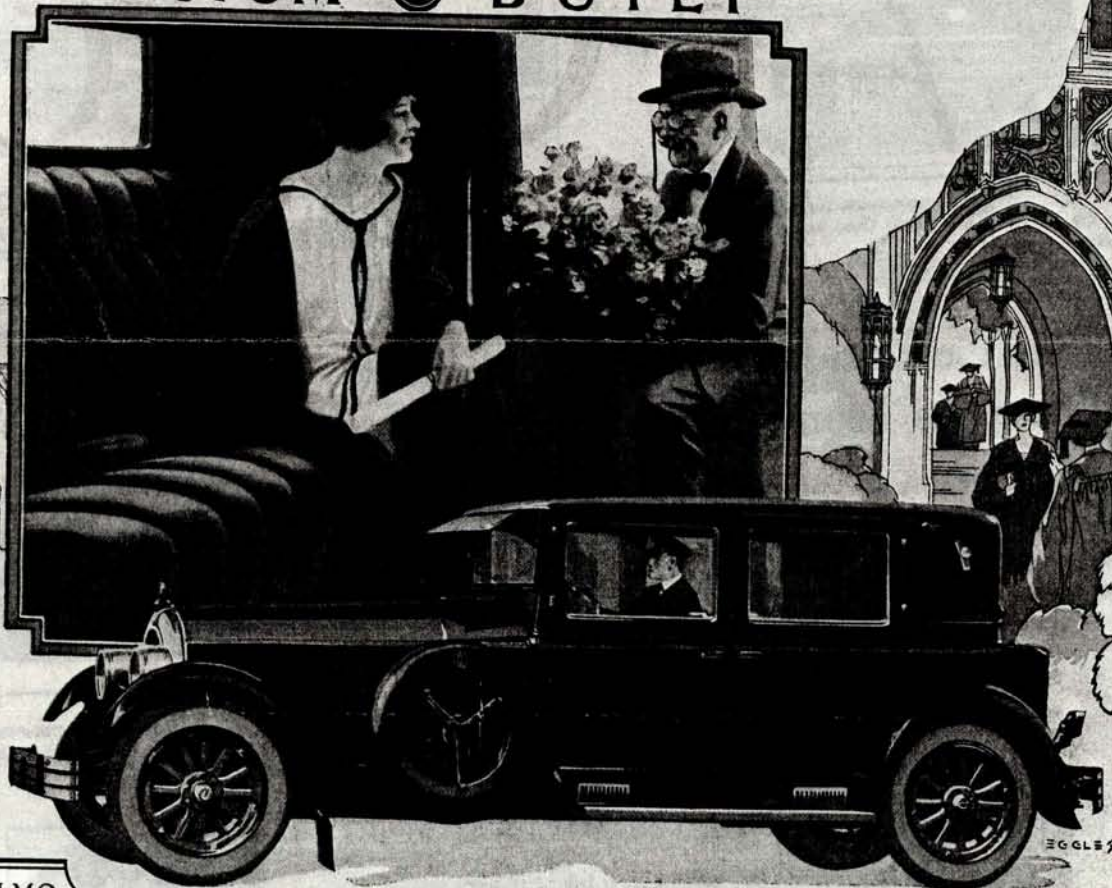
1926 KISSEL 1925



FINALLY A HIGHWAY SIGN !!!

KISSEL

CUSTOM  BUILT



It is unwise to
use this label
except with
GENUINE
CHASE
Velmo
SANFORD MILLS
MAINE
The Authentic
Mohair Velvet
Upholstery

THIS LABEL
IDENTIFIES THE
GENUINE FABRIC

EGLESTON

CHASE VELMO

is made in a variety of qualities adapted to the most expensive as well as moderate priced motor cars. Among those using this perfected Mohair Velvet are:

- BUICK. Master Six Models: 4 Passenger Coupe; Country Club Coupe; 5 Passenger Brougham Sedan; 7 Passenger Sedan.
- CADILLAC. In custom built models.
- DODGE. De Luxe Sedan.
- ELCAR. All closed models.
- GARDNER. Standard Six and Eight Cylinder 5 Passenger Sedans.
- JORDAN. All closed models.
- KISSEL. All Sedans, Broughams and Coupes.
- LINCOLN. Optional equipment in both standard and custom models.
- MARMON. Optional in all closed models.
- NASH. All Nash four-door enclosed cars and the Advanced Six Victoria.
- STEARNS-KNIGHT. Optional equipment in all enclosed models.
- STUDEBAKER. Standard equipment of Standard Six Sedan and Country Club Coupe; Special Six Victoria, Brougham and Sedan; Big Six Club Coupe; 5 Passenger Sedan; 7 Passenger Sedan and Berline.
- STUTZ. Optional equipment in all "Safety Chassis" closed models.
- VELIE. Special Sedan.
- WILLIS-KNIGHT. Standard in all Great Six enclosed cars.

Kissel's Exterior Smartness Enhanced by Luxurious MOHAIR UPHOLSTERY Inside

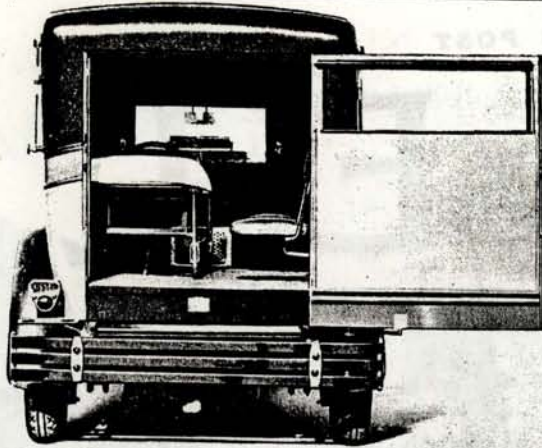
THE final touch of Kissel craftsmanship has given to Kissel enclosed models an upholstery fabric which will look as good as new long after the beauty of ordinary materials (not made of mohair) has vanished.

This fabric is CHASE VELMO ~ the perfected Mohair Velvet ~ which is admired for its lustrous, deep texture and prized for its dependability.

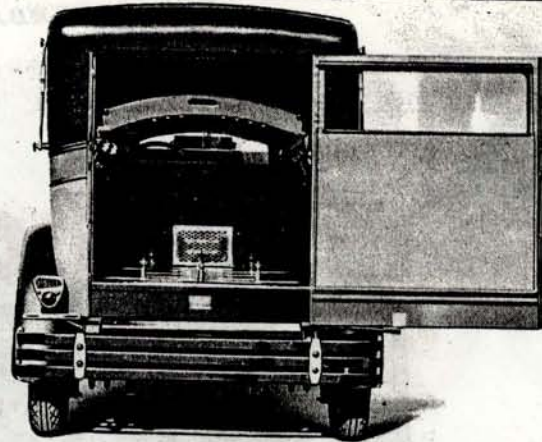
[[CHASE VELMO, a Perfected Mohair Velvet That Has No Equal for Closed Car Upholstery]]



Made by
SANFORD MILLS, SANFORD, MAINE
L. C. CHASE & Co. - Selling Agents - BOSTON
NEW YORK DETROIT SAN FRANCISCO CHICAGO
Free on request an interesting booklet, "A Glimpse Inside"



The spacious interior provides ample room for stretcher and seating accommodations for attendants. When used as an ambulance no hearse features are visible.



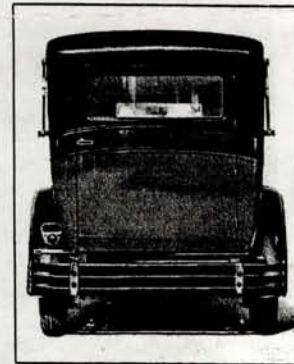
The hearse equipment is of the most modern design and highest quality. The low floor and wide door make the casket compartment easily accessible.

Kissel Custom-Built Body and Chassis Possesses Many Exclusive Features

IN no other make are you offered such an amazing array of major mechanical, engineering, style and comfort improvements as are built in this latest Kissel Combination Hearse and Ambulance. Space does not permit going into detail, but among some of the more important features are the following:

- 1—Custom built bodies with equipment to meet your specific requirements.
- 2—Exclusive coach designs creating individuality and adding prestige to owners.
- 3—All major units cushioned-in-rubber, eliminating shackles, spring bolts and working joints. Creates new riding comforts and quietness never before experienced in a hearse or ambulance.
- 4—Fully stabilized chassis. The most rigid chassis ever constructed. Large tubular cross members instead of ordinary thin steel channel iron.
- 5—Scientifically designed frame with "kick-up" over front and rear axle. Lowers center of gravity, creating greater roadability without sidesway.
- 6—Low hung bodies, making floor nearer the ground.
- 7—Advanced Engineered Kissel-built Six Cylinder Motor. Possessing every modern feature, adding to smooth, unflinching performance and economical operation.
- 8—Lockheed Hydraulic Four Wheel Brakes—the most efficient brakes ever developed. Pressure equalized at all four wheels, insuring quick stop without danger of skidding.
- 9—Long wheelbase for easy riding.
- 10—Hand Polished Duco Finish in attractive and appropriate color combinations.

[Complete Mechanical Specifications sent on Request]



The Kissel from the rear possesses every appearance of a modern sedan or limousine.



The driver's compartment furnishes every convenience and luxury of a high grade passenger car.

The scientifically designed chassis offers the height of mechanical perfection, easy riding qualities and safety.

