

The Kisselgraph

November 2006

Official Publication of the Kissel Kar Klub
c/o Hartford Heritage, Inc.
147 N. Rural Street
Hartford, WI 53027
Telephone: (262) 673-7999
E-mail: info@wisconsinautomuseum.com

100 YEAR ANNIVERSARY EVENT

The One hundred year anniversary was certainly a big one for Kissel. Ninety-Six family members and car owners were on hand from Wisconsin, Arizona, Illinois, Kansas, Michigan, Iowa, Minnesota, S. Dakota, California, Utah, and Nebraska. We also had 10 extra cars that were brought from all over the country for the event. One car an '09 Kissel, which is owned by Mrs. Rosenburger from Fredonia, ^{was} actually driven back and forth to Hartford on Friday and Saturday. This is approximately 35 miles one way each day! Of course the Kissel never failed. We had a lot of early arrivals showing up as early as Wednesday, On Friday we had a planned tour, since many of the members had indicated that they wanted to do their tour on Friday instead of Sunday we had a bigger vehicle. It was a very large school bus! It was really a hot day, but those members that showed up decided to take the tour of the historic sites in Hartford and Holy Hill area on this school bus. They really packed them in! The person that was in charge of the tour was quite and entertaining lady, she runs the history room for the City of Hartford Public Library, and she really knows her history of the area. I was told

+
Wash,
Oregon,
Tennessee,
Montana

her comedy and history well made up for the terrible heat that we had that day

Saturday was the general event with (10) extra Kissels parked out front of the museum, plus one from inside

The show room of the museum had some Kissel's also. The general public that did arrive could see plenty of Kissel's without having to go through the museum.

After seeing what was outside most of them decided to pay the admission to see the entire collection of Kissels and other Vehicles.

Later that evening we enjoyed a wonderful meal prepared, which was a

Chef carved tenderloin. At the end of the meal we did have a toast, presented by Dale Anderson to the Kissel Motor Car Company members that had the foresight, the attitude and the work ethic to create the Kissel Motor Car Company, so many years ago, which is so cherished Yet, today!

George Carr gave a very interesting talk on the lever engine that Kissel was experimenting. One was installed in one, perhaps two of the White Eagles. George managed to pick-up one of the White Eagles that originally had a lever engine in it. Someone put the Kissel engine back into it. So George replaced it back to a Lever Very interesting history and he gave a very nice talk

Gary LeMaster who has taken over the Roster of the Kissel Kar Klub, said a few words about keeping up the Roster. Joseph Leaf also is helping in maintaining that list. There were then comments from the floor about whether we should go back to having annual reunions or five years. General consensus of opinion of those that were present, which included family and Kissel owners was every five years, however since that meeting others have expressed an interest in every other year. We'll try it in two years from now, and see what sort of response we actually have to determine how that goes.

Sunday was pretty much the rap up, there were a couple of people that still wanted to take The Historic Tour, Those that were here had a personal tour guide in an air conditioned car. We didn't need the air conditioning on Sunday because it rained, and in fact, approximately ten blocks south of the museum a tornado went through Hartford Sunday afternoon. It took down a lot of trees, and a large portion of roof off the middle school, in addition it wiped off several rooms from the Silver Bell Motel. One of our members, Kenneth MacKinnon checked out of that motel earlier!

Many of the members took great advantage at going through our files of Kissel information. Many, many copies were made of literature and instructions. I would like to point out that anyone in the area that does need information, please feel free to drop in and we will try to accommodate your request.

All in all the events seem^{ed} to go quite smoothly and people were really quite happy with the program.

I would also like to thank those that gave extra donations during this period of time, as you know the Kissel Kar Klub is

not a *dues structured* operation and operates basically from money given by the museum to the club and by individuals in the club that are making donations directly to the club itself. Feel free to keep those donations coming!

INTERNET BULLETIN BOARD

Lynn Kissel from the club has announced at our annual meeting that he has created a bulletin board available for Kissel Kar Klub members. So far there is a total of 68 articles and twenty-three registered users and we could use more activity to help each other out, with all different types of information. So you might want to consider being part of the fun and education, by registering on "The Board."

The Bulletin Board address is:

<http://starship.org/KisselKlubBB/>

AUSTRALIAN KISSEL HISTORY

Just in time for the 100th year anniversary, John Lewis from Australia, sent us a copy of a historic booklet that he has written. It's all about Kissel Automobiles in Australia. John of course, is a long time Kissel owner and restorer and has a bountiful amount of information available. The booklet is available directly through him. It's approximately sixty-eight pages long and would be a handy addition to anyone's bookshelf. To get "The Foreign experience of Kissel."

The e-mail address of John is:

kisselman@hotmail.com

COOPER STORY

Mr. Cooper was a long time owner of a Kissel, and he was able to make it to the 100th year anniversary, and the car that

Formerly
 he formally owned was also here, brought by Bob Brown. This article that he submitted is for our entertainment and education!

As follows:

In 1954 Beryl and I moved with our baby girl MacKenzie (named appropriately, as it turned out, after some noisy, out-of-control Highland ancestors) from Chicago to Milwaukee in my Mom's 1948 Chevy so I could begin a 4 year residency in Orthopedic Surgery. I received the much sought after appointment largely because the Chief of the program and my Dad were colleagues and friends. It certainly had little to do with my entirely undistinguished career as med. student and intern!

Our little apartment in the middle of downtown Milwaukee cost us \$49.50 a month and my stipend at the hospital was \$15. So in spite of various loans, we were living fairly close to the edge.

One day on the way home from the hospital I saw this car on a used car lot. It was a great square beast, sort of dull bluish-grayish with black fenders, and, for gosh sakes, the running boards flared up at the front ends! I was hooked. The guy at the lot said it was a 1927 Kissel, which meant absolutely nothing to me, and that it ran good and that it would cost \$200 because it was AN ANTIQUE! Well, we talked around the edges of that for a while and I finally drove it off the lot for \$150. I'm sure the used car guy rubbed his hands with glee. So the only one who was not so pleased was, you guessed it, Beryl. In fact, she was furious: "that's 3 months rent which we don't have, d---n it!" etc. etc.

And that 's the car I drove back and forth to the hospital and to drive-in movies, with a crib in the back seat for Kenzie, for 3-1/2 years. The top leaked pretty bad, so I had to have that patched, and she used about as much oil as gas. But I wish you could have seen her parked in the doctors' parking lot with all those Lincolns, Caddys, Buicks and Mercedes!

Well, when the residency was over in 1958 she went with us when we all (we had another little girl by then) moved back down to Peoria. I drove her, of course, and Beryl, who had learned to drive by then, took the kids in a Chevy. We moved into an old house on the Bradley campus. This was an ungainly dirt-floored building in back on the alley which became our garage with one walled-in stall for the Kissel. And there she sat most of the time for several years. I was so busy and sort of scared like all young folks trying to build a practice that the Kissel was put out of mind.

But not by Beryl, who had come to think of the car as another member of the family. Finally, in 1973, she quietly and unknown to me turned the car over to a member of the local antique car club for a partial restoration. We had decided years before that we wanted to keep on driving it, and we'd not try to really complete the restoration. Anyway, one Saturday morning in 1974 on my 50th birthday, I was standing in the driveway when I saw a car coming down the street. I called to Beryl and pointed out a beautiful Kissel that I said, "Looks just like ours!" Beryl had invited friends and family to the carefully staged event which I must say remains one of the high points of my life. Thereafter and

for many years we took the Kissel to many County Fairs and even, a few times, to the State Fair. At the County Fairs she routinely took 1st's in the Classic division unless a beautifully restored burgundy colored 1928 Franklin showed up. If it did, we had to be satisfied with 2nd. At all the fairs, the first thing Beryl would do is look around for "that darn Franklin"----

At one of the State Fairs there was a contest for the best costumes appropriate to the year of the car. Thanks to her efforts Beryl and I took first prize. The Kissel took a second.

In the late 80's Beryl began her long battle with heart disease and finally, Alzheimer's so the Kissel again had to take a back seat, reposing grandly in a fine antique car museum until bought by Mr. Robert Brown. Our Kissel is a very fortunate old lady because she is not only being lovingly cared for, but she has had a number of badly needed restorations and repairs done. And I'm allowed to sit in and even drive her---- if I'm very careful.

I hope that when she finally goes to car Heaven, Beryl will come and dust her with the long-handled feather duster that always waited in the black trunk.

WIRING DIAGRAMS

Just received a wonderful collection of wiring diagrams for of the Kissel models. I see some pretty horrendous wiring even on restored cars. If you would like to get yours put back into shape or if you would like to do a rewiring job let us know. I can put one on the copy machine for the price of a stamp and we will mail it to you. The

collection is just one of these items that just walked in the door one day, and was donated to the museum.

DEWAYNE ASHMEAD'S KISSEL

For those that were at the museum you would most likely remember the green and cream Kissel Speedster that was here and owned by DeWayne Ashmead. He had sent his people to represent him at the event. The car was then left here at the museum with the intentions of taking to Cranbrook, which was subsequently cancelled. I was able to convince DeWayne to take it to the

Masterpiece Show down in Milwaukee on the Lake Front, this for the most part a show by invitation only. A friend of his from Chicago, picked up the car and displayed it at the event and the Kissel drove away with the "BEST OF SHOW AWARD." Right after that the Auburn Cord Duesenberg event was going on, the following weekend or so. So the car was transported to Auburn, at that show the Kissel received again the Best of Show"! DeWayne tells me that even the Governor of the State Indiana presented the award. It's great for Kissel, it's great for publicity and it helps all of our vehicles appreciate in value.

SOUVENIRS

Along with this news letter you will find a sheet of paper which list the various souvenirs which are available from us. The predominate colors are Goldbug, Yellow and Black. In most cases the caps and mugs are black with gold printing and the other items are predominately gold. The prices that are quoted on the sheets are the prices delivered, so there is no taxes, fees or

handling charges. I always believe we shouldn't handle things so much anyhow! In the case of the souvenirs they are owned by the museum, so if you make out any checks, for purchases make it out to the Wisconsin Automotive Museum. And we can handle it through our normal papers.

ANOTHER GRANT

This is under museum news, like to point out that several years ago we were fortunate to get approximately ½ a million dollar grant to do much of the reconstruction on the building including roofing and electrical work, tuck pointing, general cleaning up of the museum building itself. Along with that it was a matching grant where we had to come up with approximately twenty percent of the cost. Quite a few of you in the membership were kind enough to make a donation for the matching grant. Well, as things happen we were just awarded another grant to go into phase two of the project. Phase two is a lot of the mechanical things, such as a new heating, air-conditioning units, sewer, lines and water lines. However, one very attractive item to be added is a staircase, in the center of the museum going from the main floor to the second floor. We were awarded approximately a quarter of a million dollar grant and again we have to raise twenty percent of the grant. Any of you that are so inclined we would certainly appreciate a check made out to: The Wisconsin Automotive Museum Matching Grant Fund.

CARS FOR SALE

Often I receive phone calls and letters where people are looking for a Kissel to purchase. Most want speedsters of

course. I will also list those that are for sale in this newsletter. Now admittedly the newsletter is not regular and comes out once or twice per year, but you never know. At present John and Jerry Kissel from Kansas have their 1930 Sedan here in the museum, and it is for sale. There are only 4-1930 Models left in the world. If interested check your roster and negotiate directly with them.

In addition Paul Jonas from Michigan has his very beautiful ground up restored 1908 Kissel for sale. There's only two restored 1908 Kissel's around. He indicated to me his asking price is \$125,000. So check the roster and negotiate with him directly.

Hope I didn't forget any!





Mark A Kissel 1928

Dewayne Ashmead 1925



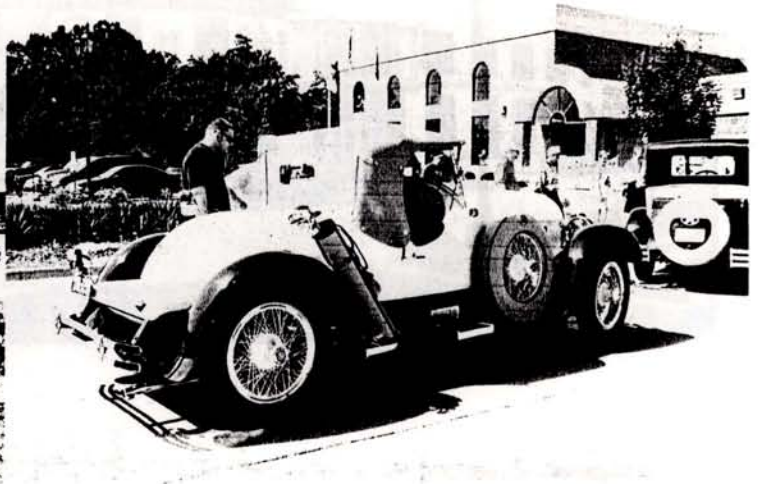
Mark A Kissel 1927

Bob Brown 1928
was Hugh Coopers car
see story

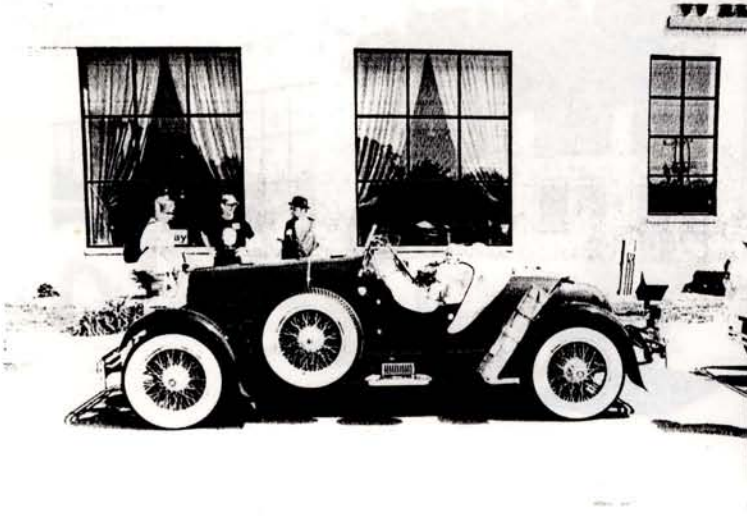
No Foto of Leu's 1918



Joan Rosenberger 1909



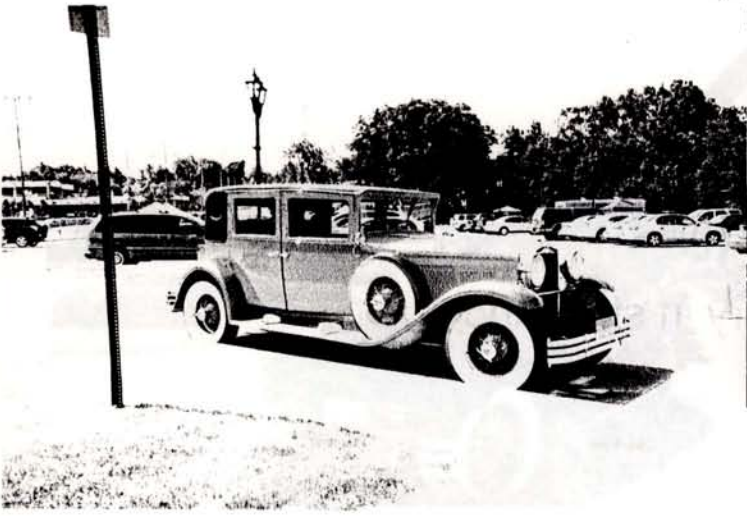
DeWayne Ashmead 1925



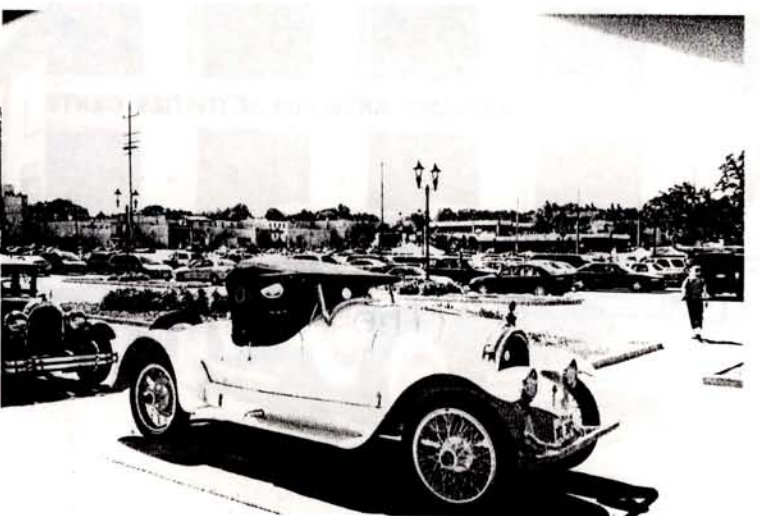
John Quam 1925



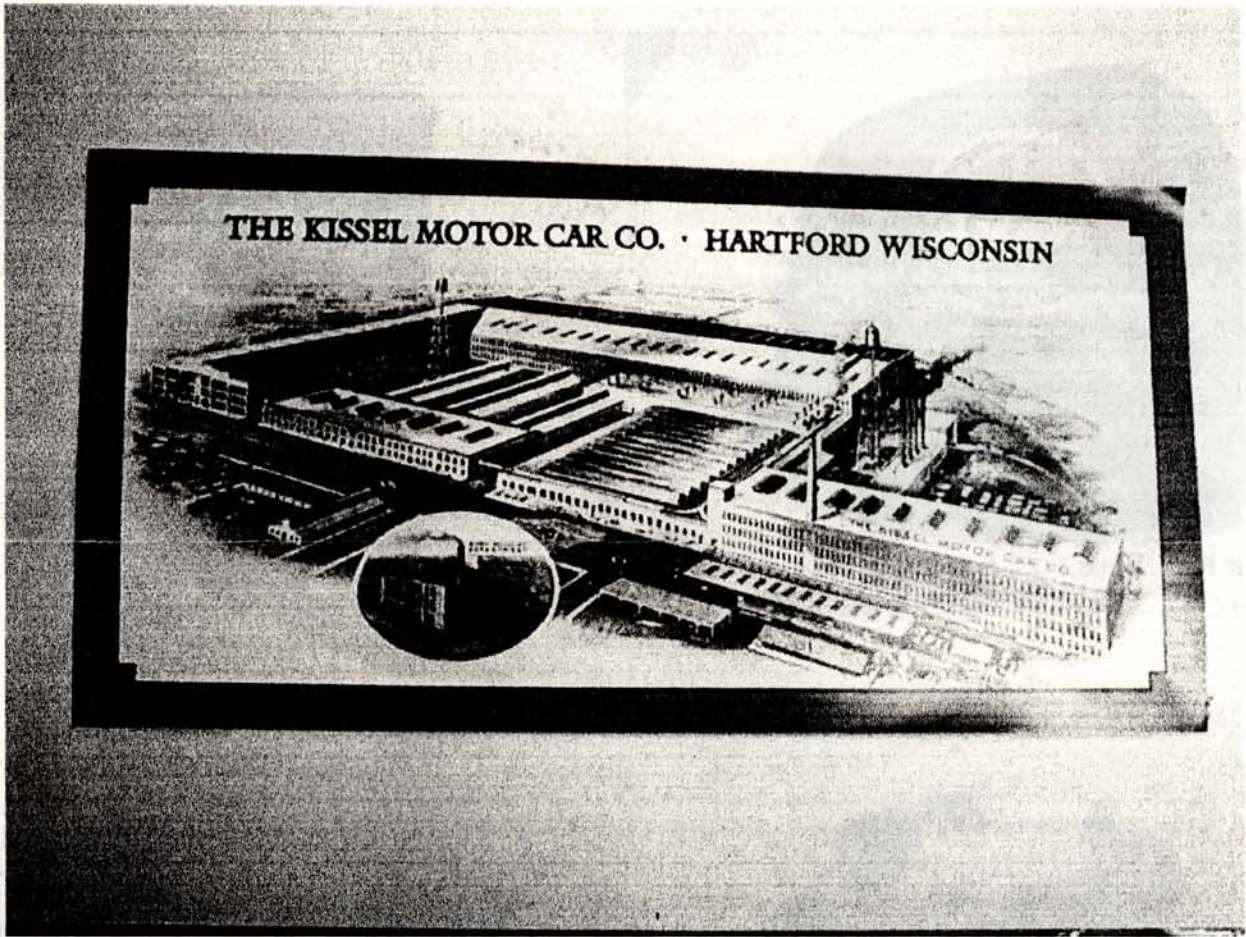
Lynn Kissel 1924 In Process



Bonnie Strand 1928



Tom Harrington 1920



KISSEL FACTORY FOTO ON HIGH QUALITY KODAK PHOTO
PAPER. SUITABLE FOR FRAMING
TWO SIZES AVAVIILABLE

20 X 30 INCHES \$32 SHIPPED

12 X 24 INCHES \$22 SHIPPED

(The borders may vary in style and color)

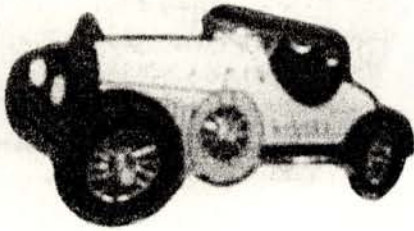
COLORS IN BASIC GOLDBUG YELLOW AND BLACK



Kissel Kar Kap. Solid front and mesh back, adjustable.
\$10 including shipping



Kissel Kar Kup. Printed on both sides. \$10 including shipping



Kissel Kar Jewelry. Two stud mount 1.5
inch long \$6 including shipping



Kissel Kar Magnet 3 inches long \$6 including shipping



38 Factory fotos from WW2 on CD \$14
48 Factory fotos 1920's on CD \$14
Both \$26 all including shipping



Museum Tee shirt with Kissel on front only \$15
including shipping